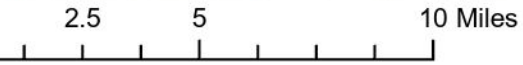
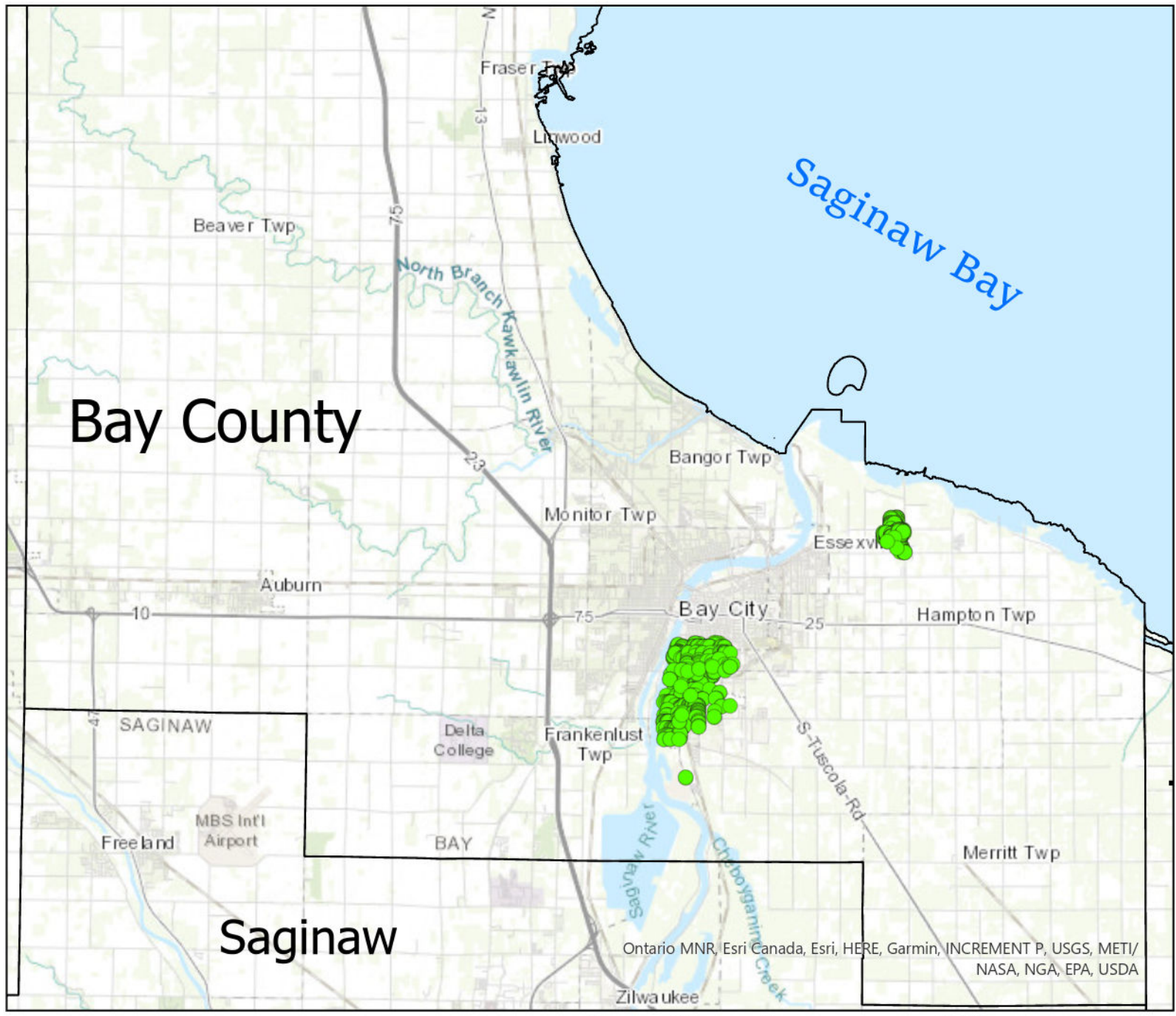




# Forest Sustainability Program

## 2025 Ash Tree Treatment Operations: Ash Trees to be Treated



**Legend**

- Trees to be Treated
- Ash Tree Locations
- County Boundaries

Specific areas of Ash Trees included in the 2025 treatment project are located along streets and in the locations of the Bay County Golf Course, Bay County Medical Care Facility, Bay County Juvenile Home, James Clements Municipal Airport, Breaker Cove Condominiums, and all publicly owned Ash Trees along the streets of the Southeast Quarter of Bay City (East of the Saginaw River, south of Columbus Avenue). Other geographic areas within Bay County containing publicly owned Ash Trees will be treated in future years.

Ontario MNR, Esri Canada, Esri, HERE, Garmin, INCREMENT P, USGS, METI/NASA, NGA, EPA, USDA